

Instructions and User Guide

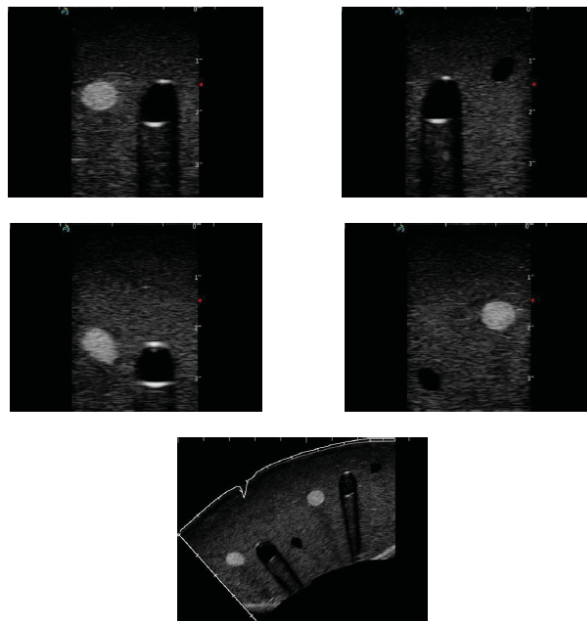


This guide will help you to understand how to handle and to increase the durability of your phantom. Next, we present some important information about the phantom NAV:

1. Always keep our phantom in the storage case and at room temperature.
Note.: Exposure to temperatures above 30°C (86°F) for long periods can provoke deformations and loss of properties;
2. When training, remove only the packaging lid, keeping the phantom in the original base;
3. After training, clean your phantom Breast with paper towel removing excess gel. Following, wash it in running water without removing it from the base.
Obs.: Never store your phantom with excess gel. This can cause bad smell reducing product durability;
4. **Never use soaps or sponges for cleaning your phantom.
They can damage your product!**
5. After cleaning, store your phantom according to instructions in item 1;
6. The phantom Breast is a product for didactic purposes, made ONLY for medical trainings. If you have any doubts contact us through our relationship channels.

About your phantom

1. We recommend the utilization of new and sharp needles not larger than 21G. During training, repositioning of needles can cause needle tracks. To reduce this marks its advisable an interval of 24 hours until the next use;
2. When using the needles described above, phantoms allow movements up to 30 degrees relative to product surface. Avoid long needle movements, they can diminish your product's durability;
3. We do not recommend injecting or removing any types of materials during utilization. If you have this need, get in contact with us;
4. The phantom NAV has two sets of nerve - artery - vein, arranged at different depths. These structures enable the training of regional anesthesia procedures and ultrasound-guided central venous access. Below follow four ultrasound mode B images of the phantom NAV:



Réf.	Approximate weight	Length	Height	Width
PBD050503	700 g	17 cm	4 cm	13 cm