



# Versana Premier™

Care with Confidence



# Introducing Versana Premier

**Powerful. Versatile. Productive.**  
**World-class ultrasound designed for peace of mind.**

The Versana Premier ultrasound system can help you deliver high-quality, personalized care, patient after patient, day after busy day. This innovative system is well suited for general practice clinics, physical check-up centers, community health clinics, and other facilities offering basic medical care. It is versatile to cover abdominal, OB/GYN, cardiac, urology, vascular and musculoskeletal exams.

A wide variety of probes and clinical features let you provide quick and comfortable exams, see clearly, and confidently diagnose a broad range of conditions.



World-class imaging



Smart clinical features



Intelligent automated productivity tools



Clinical and product education\*



Expert service and technical support



Flexible financing options



Access to a network of Versana users

## + Versana Premier

is part of the Versana ultrasound family: complete solutions that help empower care without compromise, balancing capability, affordability, and reliability.





GE Healthcare

MI 1.1  
Tis 0.7

35C  
Adult

FR	28
AO%	100
CHI	3.5
F1q	52
Gr	18.0
D	Off
Whizz	Off
CF	2.5
F1q	18.5
Gr	1/3
L/A	3.9
PRF	826
WF	3/8
S/P	

TVI  
Elasto  
LOGIQView  
3D/4D

P4

P3

P2

P1

Versand Premier

L6-12

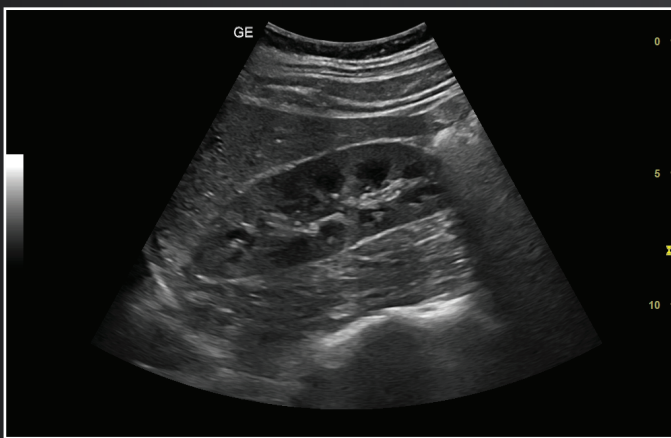
4C

# A partner you can trust

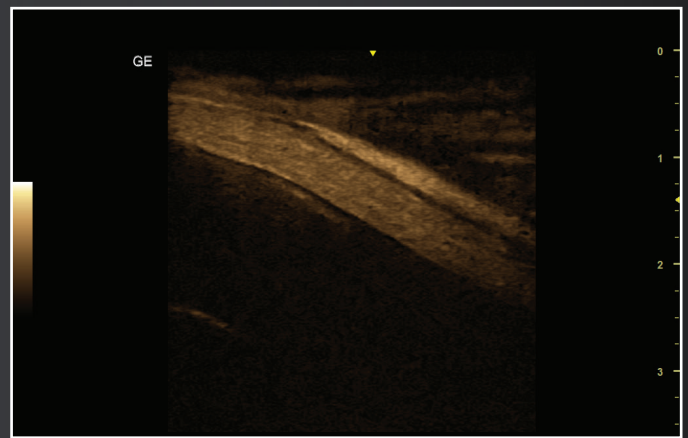
Take your practice to new levels of excellence

## + World-class imaging technology

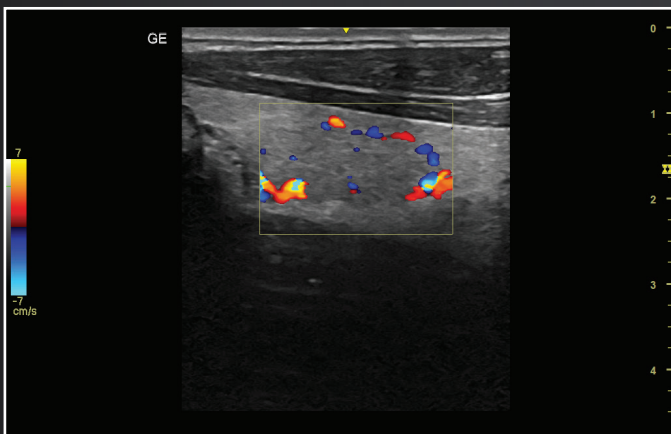
Versana Premier delivers outstanding imaging power and clarity to boost diagnostic confidence. It helps you see clearly, differentiate between tissues, and delineate structure boundaries. You'll enjoy proven functionalities found on most advanced GE systems.



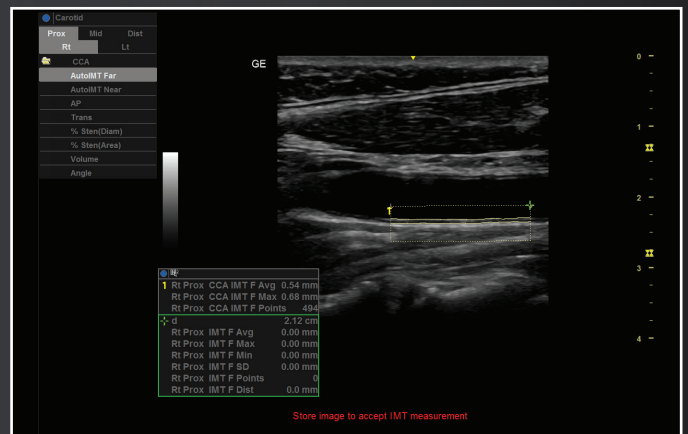
CrossXBeam™ and SRI-HD to define structure borders clearly.



Sensitive B-Flow™ and B-Flow color imaging to analyze blood flow, diagnose vessel-wall irregularities and stenosis, and more.



Sensitive color Doppler to examine thyroid vasculature and blood flow in vessels.



Auto IMT automatically measures the thickness of the Intima Media on the far and near vessel walls.

Versana Premier. Powerful. Versatile. Productive.

## + Comprehensive service and support for peace of mind

GE delivers flexible, worry-free, multi-year coverage. It's your assurance of long life, high uptime, maximum patient volume, and strong return on investment.

- Expert service engineers always close by
- Simple maintenance; easy troubleshooting and repair
- InSite™ service technology† for fast remote diagnostics and repairs



## + Decades of GE Healthcare heritage at your service

Invest in Versana Premier and benefit from vast GE ultrasound expertise. It's designed with you, your practice, and your patients in mind to meet your clinical, workflow and connectivity needs.



# A complete solution

Advanced capability, clinical education, and financing to fit your budget

## + Versatile system, simple to use

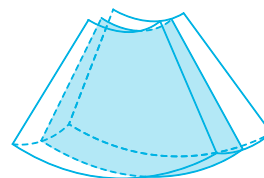
Multiple exam protocols and applications help you diagnose a wide spectrum of patient conditions. Intuitive automated tools streamline workflow. The system boots up quickly and operates quietly. It is compact to fit small spaces and easy to maneuver between rooms.



**Scan Assistant** lets you create standardized exam protocols, reducing fatigue and maximizing exam consistency



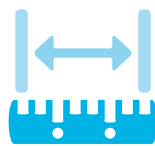
**Whizz** dynamic image tuning continuously optimizes the image as you scan, even as you move from one organ or area to another



Use **3D volume** imaging for rich anatomical views



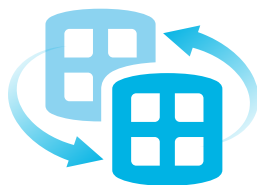
Capture standard pre- and post-stress cardiac views with **Stress Echo**



Take **automated measurements** of bladder volume, cysts or masses, IMT thickness, fetal characteristics and more



Overlay **voice comments** on images for playback when reviewing exams



Compare current and prior exams side-by-side with the **Follow-Up Tool**



Use **battery power** to move the system from room to room without powering down



**Network options** let use the cloud<sup>1</sup> to share images with for consultation<sup>2</sup>

## + Flexible financing choices to enhance return on investment

Financing plans<sup>3</sup> including monthly payments help you meet your financial goals and grow your practice.

+ Ergonomic features for clinician and patient comfort\*

+ Large full HD display

+ Touch panel

+ Articulating monitor arm\*

+ Gel warmer

+ Integrated battery

+ Height-adjustable console

**Versana Premier. Powerful. Versatile. Productive.**

+ Sharpen your skills and stay ahead of the curve

- Scan Coach: 3D animation, anatomic illustrations and reference images
- My Trainer: on-board help with system care, setup and operation
- Web-based product and clinical tutorials
- Local face-to-face training and remote application support†

\* Optional features which may vary from country to country



# An opportunity for growth

*Ultrasound to serve you well today and set your course for the future.*

## + Experience the strength of the GE Healthcare family

Your support team is fully trained & GE Healthcare qualified, deeply experienced, and close by.

- Expert support during and after purchase
- In-depth product instruction
- Remote or on-site technical, clinical and network support

## + Customized solutions and path to growth

Help your practice grow with Versana Premier. You can select a basic package, with the option to add more probes and software. Or let GE experts help select another system to suit your needs.

## + Versana Club: Learn. Network. Share.

The Versana Club gives you access to member resources members that can help expand your ultrasound knowledge and improve your practice. It's a place to share images with your peers from around the world.

### You'll also enjoy:

- Educational offerings
- Web-based video tutorials
- Information on Versana family service solutions and products
- Up-to-date content on ultrasound and patient care
- Notices of regional ultrasound events and other news
- Access to the broader family of GE ultrasound user clubs



## Versana Premier. Care with Confidence.

**Powerful. Versatile. Productive. World-class ultrasound designed for peace-of-mind.**

<sup>†</sup> Local educational offerings may vary according to regions. Please check with your local GE representative.

<sup>\*</sup> Option may not be available in all countries.

<sup>1</sup> Requires internet connection; may not be available in all countries.

<sup>2</sup> Image sharing to mobile devices via Bluetooth available in some countries

<sup>3</sup> Financing options vary from country to country. Please check with your local GE representative.

Products mentioned in this material may be subject to government regulation and may not be available in all countries. Please check with your local Sales Representative. Shipment and the effective sale in certain countries can only occur if the product is approved. Final product configuration and features may differ from the ones represented here and may not be available in every country. Check with your local GE representative for details.

Imagination at work

© 2018 General Electric Company - All rights reserved.

GE Healthcare reserves the right to make changes in specifications and features shown herein, or discontinue the product described at any time without notice or obligation. Contact your GE Healthcare representative for the most current information. GE, GE Monogram, Versana Premier, InSite, CrossXBeam and B-Flow are trademarks of General Electric Company. GE Healthcare, a division of General Electric Company. GE Medical Systems, Inc., doing business as GE Healthcare.

JB59804XX 300-19-U067E